

# Prevention, Partnership, and Possibilities: Utah's Journey of Reform and Reinvestment

---

Brett M. Peterson, Director,  
Utah Division of Juvenile Justice and Youth Services

# How to transform?

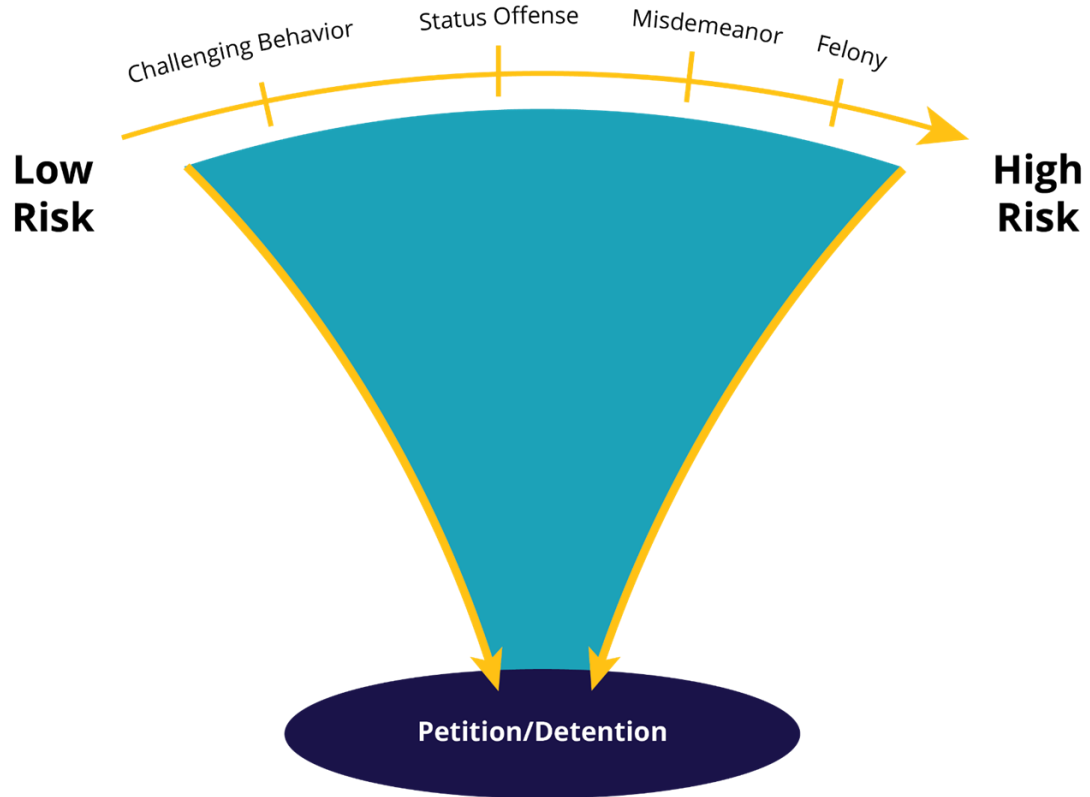
---

- Philosophy
- Policy
- Practice
- Partnership

# What we knew

- Most youth faced low-level charges, but responses were inconsistent; diversion showed better outcomes
  - Youth often securely detained pre-adjudication on low-level nonviolent charges; reoffense rates higher for those detained
  - Costly out-of-home placements were common for low-level offenses and contempts, despite poor public safety benefits
  - Racial and ethnic disparities across the system
  - Lack of rural services
  - Once involved with the juvenile justice system, youth remained involved for years
  - Many youth introduced into the deeper systems of child welfare and juvenile justice, simply to access services.
-

# Before Reform



# What we did

Limit secure **detention** use

Standardize and expand **diversion**

Keep low-level **school offenses** out of court

Restrict **probation length**

Narrow **placement** eligibility

Strengthen **supervision** and **treatment**

Augment **responses to noncompliance**

Heighten **oversight**

Reduce **time** in placement

Expand **restorative justice**

Revise **transfer** to adult system and age for juvenile jx.

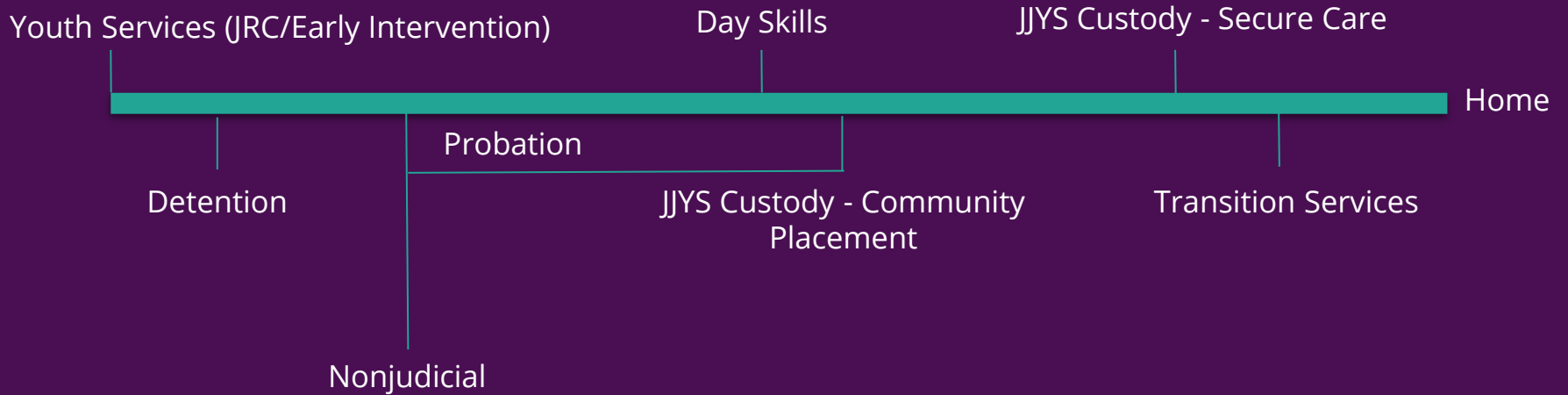
**Reinvest** in community and EBPs

# Additional policy

---

- Limited the pathway into child welfare custody just for services
- Limited juvenile jurisdiction for youth under 12
- Required adult consent before interrogation
- Limited transfer to the adult system, provided mechanism for extended jurisdiction
- Ensured youth tried as adults can remain housed in JJ settings
- All youth deemed indigent with right to free council

# CONTINUUM OF SERVICES



## The Pivot to the front end:

- Since 2017 statewide early intervention services increased over 45%
- Nearly 100 staff reassigned from locked settings to early intervention services
- Over \$12 million placed in restricted account for reinvestment in community
- Nearly \$8 million invested into the statewide expansion of SMR
- 3 new receiving centers
- **Last year over a 1000 youth completed JJYS Youth Services statewide. At 180 days after completion, 98% of these youth avoided probation and JJYS/DCFS custody.**



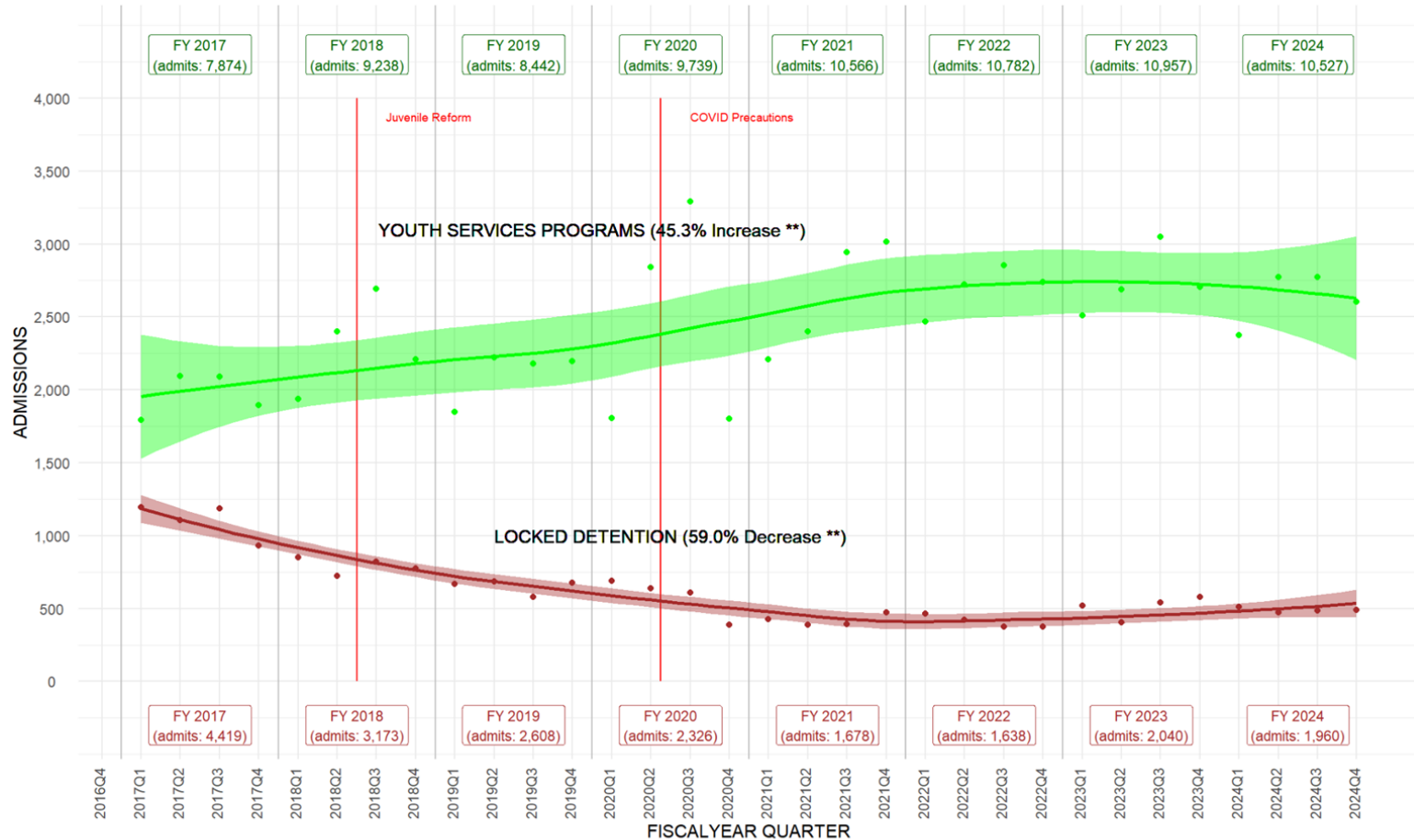


## YOUTH SERVICES

The Youth Services Model Is A “No Wrong Door” Approach To Early Intervention. Through This Model, Utah Delivers Evidence Based, Individualized Youth And Family Plans With Early Screening, Assessment, Plan Management, And Comprehensive Access To Services--All Driven By The Youth And Family Strengths And Needs.

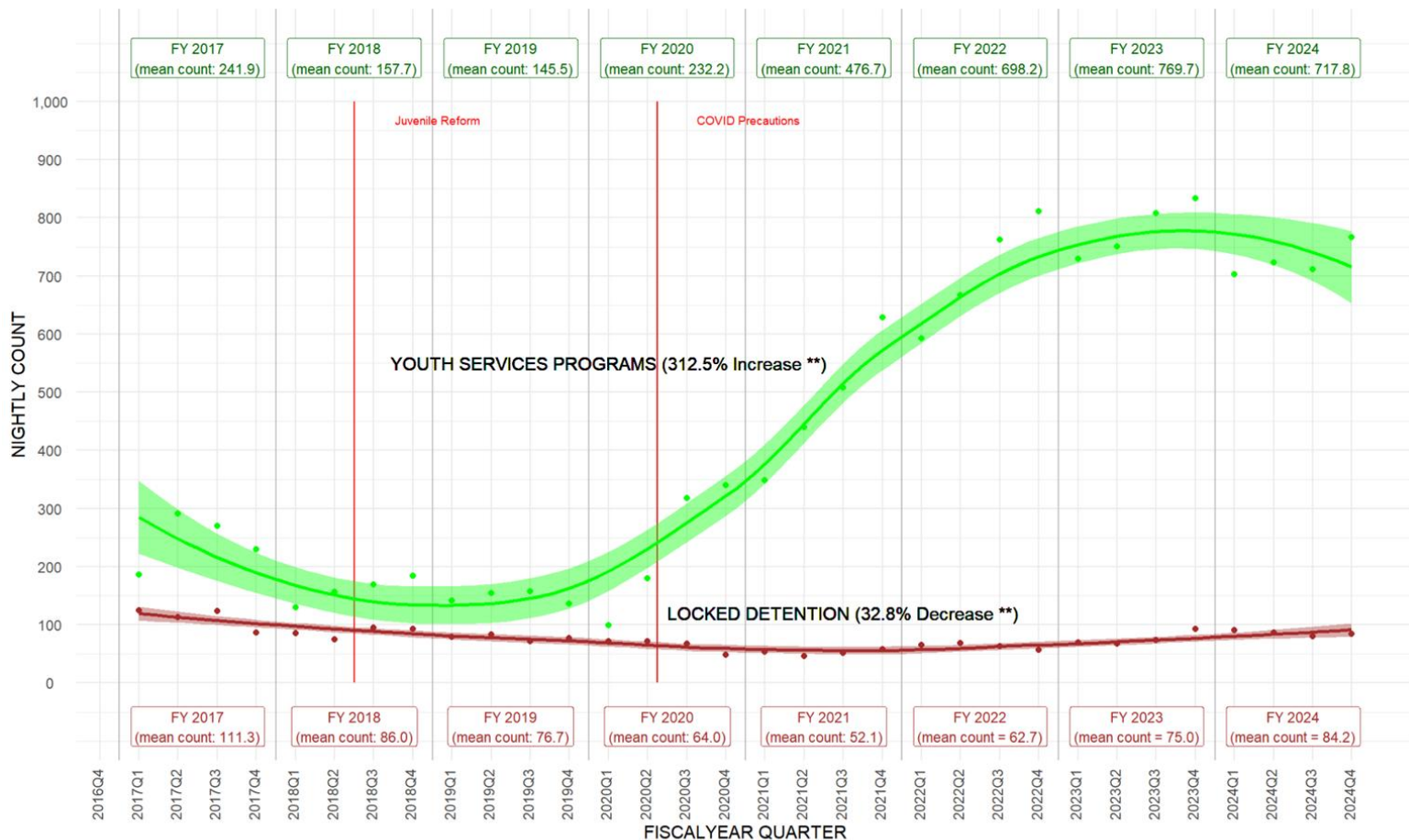
# Admissions to JJYS Locked Detention & Youth Services Programs by Fiscal Year and Quarter

(FY 2019 - FY 2024)



Source: Courts & Agencies Record Exchange(CARE); 2024-08-01 10:50:21.944759.  
 \*\* Change between 2017Q1 & 2024Q4.

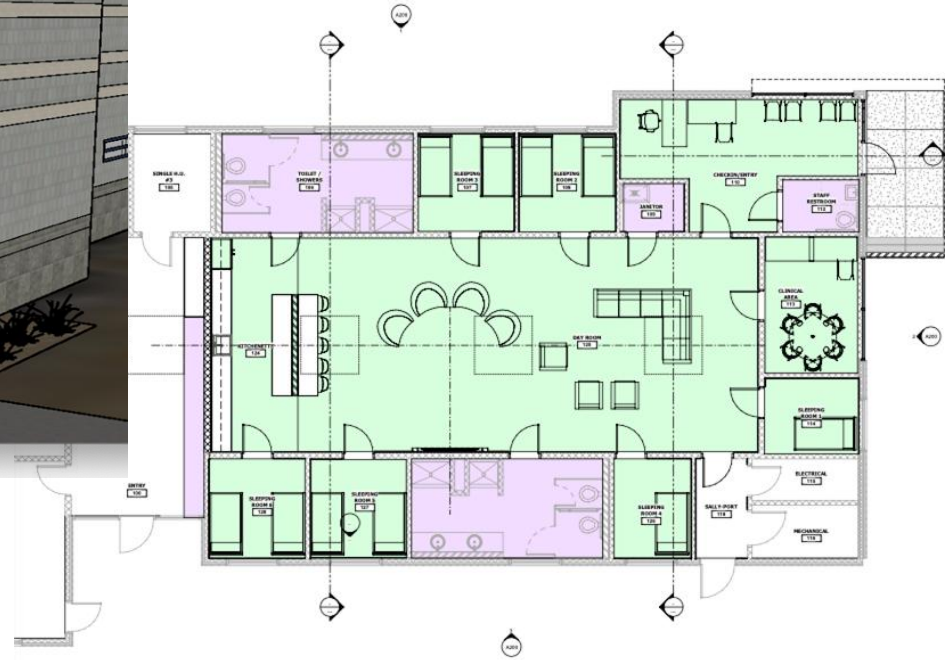
# Nightly Counts in JJYS Locked Detention & Youth Services Programs by Fiscal Year and Quarter (FY 2019 - FY 2024)



Source: Courts & Agencies Record Exchange(CARE); 2024-08-01 10:51:08.780428.

\*\* Change between 2017Q1 & 2024Q4.

# SHIFT TOWARD YOUTH SERVICES





# FARMINGTON BAY YOUTH CENTER



# WEBER VALLEY YOUTH CENTER





# WEBER VALLEY YOUTH CENTER



# TOOELE COUNTY YOUTH SERVICES





# WASHINGTON COUNTY YOUTH CENTER



# WASHINGTON COUNTY YOUTH CENTER



# **JJOC Annual Report**

**Q&A**